

**CASE STUDY**



**SECURING DECOMMISSIONED OIL RIGS  
IN THE NORTHERN SEA**

OIL RIGS AND SIMILAR INSTALLATIONS AT SEA ARE VITAL FOR CRUDE OIL EXPLORATION. AS MATURITY OF THE OFFSHORE OIL FIELDS PROGRESS, MORE AND MORE RIGS ARE BEING DECOMMISSIONED

As complex operations they require continuous service and attention even after decommissioning. Majority of the decommissioned oil rigs are unmanned – meaning only remote monitoring and security checks are possible. This poses a serious challenge to monitoring equipment as it has to be not only adequate for the job but also very reliable.

We provide a highly effective and robust solution for remote control of unmanned offshore installations.

**SBMS-3 Controller**

Motherboard for handling sensors installed on the asset



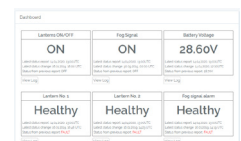
**Iridium SBD Module**

Satellite communication link with the shore



**WebControl Panel**

Asset monitoring and control tool for operators







By assuring constant monitoring of the assets and installed sensors, we can provide scheduled reports via a secure satellite link to onshore operation centre.

As complex operations they require continuous service and attention even after decommissioning. Majority of the decommissioned oil rigs are unmanned – meaning only remote monitoring and security checks are possible. This poses a serious challenge to monitoring equipment as it has to be not only adequate for the job but also very reliable.

We provide a highly effective and robust solution for remote control of unmanned offshore installations. By assuring constant monitoring of the assets and installed sensors, we can provide scheduled reports via a secure satellite link to onshore operation centre.

Most recently we have equipped with our monitoring equipment a few decommissioned oil rigs in the Northern Sea region. Each oil rig is equipped with lanterns, fog signals, pressure valves, batteries and other crucial equipment which is under constant supervision by our monitoring system. The entire system is monitored from the shore by operators who are alerted via e-mail if any abnormal activity is detected (e.g. low battery level, fog signal fault, pressure rise).